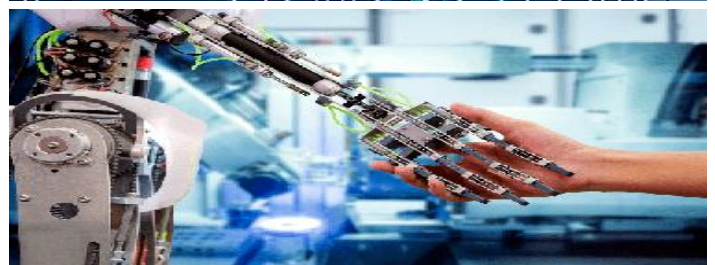
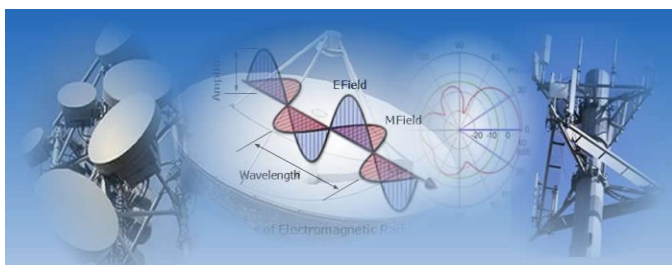
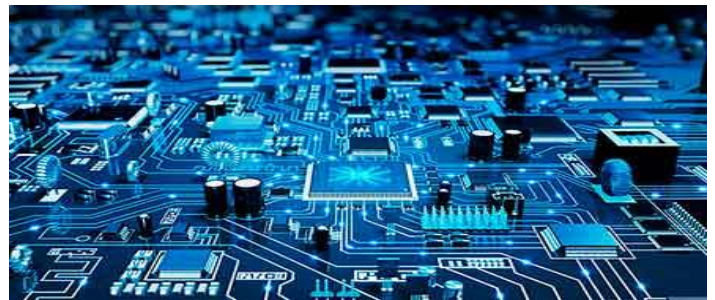
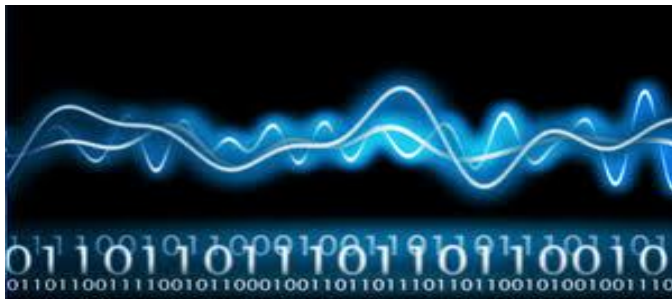




*Research is Neither a First Step Nor a Last Step **But is Always a Next Step***

Admissions Open For 2020 - 21



Ph. D. in Electronics and Communication Engineering

- Global Research Philosophy and Practices
- Emphasis on Applied Research
- Structured Research Programme
- Periodic Assessment , Credit Based Progression
- Emphasis on Multi-Disciplinary Research
- Provision for supervisory team
- Course work through e-learning (MOOCs / Swayam)
- Collaboratory research opportunities with various foreign universities

Areas of Research: Antenna and Microwave, Machine Learning, Signal and Image Processing, Optical Communication, Optical Bio / Chemical sensor, Machine learning methods for Optical imaging modalities, VLSI, Embedded Systems, Nano electronics, Bio medical image and signal Processing, Cognitive Neuro Science, Implants and Prosthetics, Speech Processing, Wireless Communication, Statistical Signal Processing, Microwave Photonics

For list of Research Supervisors, visit: <http://www.msruas.ac.in/research>

INSPIRING APPLIED THINKING

Apply online - www.msruas.ac.in

Submit your Application to: **Director Admissions**

Ramaiah University of Applied Sciences, Gnanagangothri Campus, New
BEL Road, MSR Nagar, Bengaluru 560 054

M +91-9686204883 | **P** +918045366666 | **F** +918045366677

E-mail: director.admissions@msruas.ac.in

www.msruas.ac.in

