



**RAMAIAH
UNIVERSITY
OF APPLIED SCIENCES**

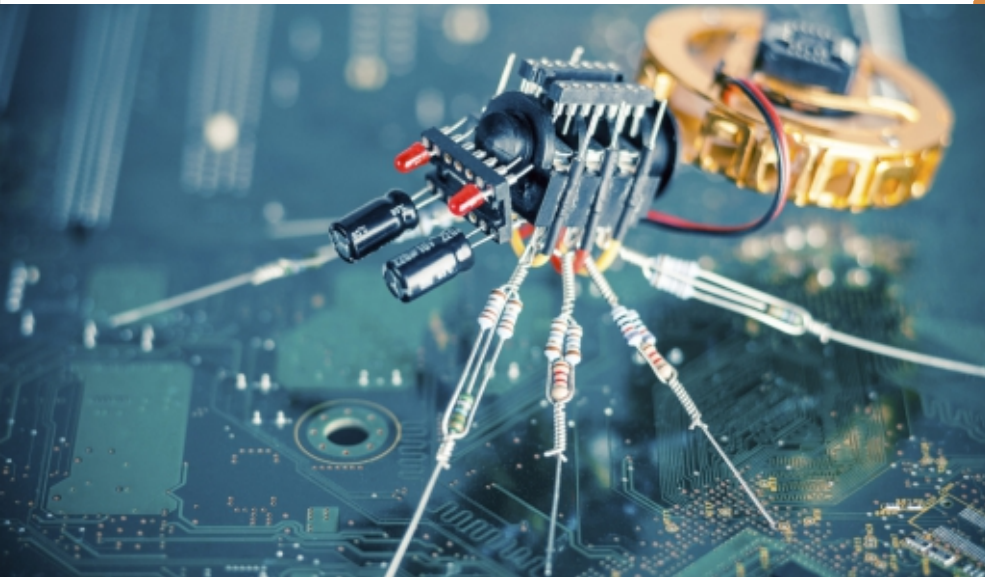


Best
Innovation
University



Applied Brilliance Makes All The Difference

Admissions Open For 2020-2021



Faculty of
M.Tech. Programme in
VLSI and Nanotechnology

M.Tech. in VLSI and Nanotechnology

Programme Highlights:

- Learner Centric and Outcome Based Education
- World Class Learning Facilities
- Gateway to Global Learning Experience
- Emphasis on Applied Learning
- Internship, Training and Placement Support
- Academic Collaboration with top foreign universities that lead to opportunity for leaning abroad
- State of the Art Laboratory in Full Custom Design, ASIC, FPGA and Embedded programming, Quantum Mechanics, Nano Electronics, Device modeling and PCB Design.
- Distinguished Guest Lectures from globally renowned Institutions and Industries

Accomplishments:

- IEEE Student branch and active association with IEEE Bangalore section and global community
- Awards to Group Project and Dissertations at Various National level Competitions
- Entrepreneurship support from Ramaiah-GoK Technology Business Incubator (RTBI)
- Publications in peer reviewed National and International Conferences

Inspiring Applied Thinking

Apply online - www.msruas.ac.in

Admission Office

University House, M S Ramaiah Nagar, New BEL Road, Bengaluru - 560 054

P +91 80 4536 6616 | **E** admissions@msruas.ac.in, director.admissions@msruas.ac.in

